



THE LODGE



THE LODGE Model number: 41SIG16602FH19

2 beds • 2 baths • 960 sq.ft. • 16' width • 60' depth

Our home building facilities invest in continuous product and process improvements. Plans, dimensions, features, materials, specifications and availability are subject to change without notice or obligation. Renderings and floor plans are representative likenesses of our homes and may differ from the actual homes. We invite you to tour a Home Center near you and inspect the highest value in quality housing available or call (417) 553-9780 to speak with a Home Consultant. Copyright 2017, CMH. All rights reserved.

<https://www.claytonhomesjoplin.com>

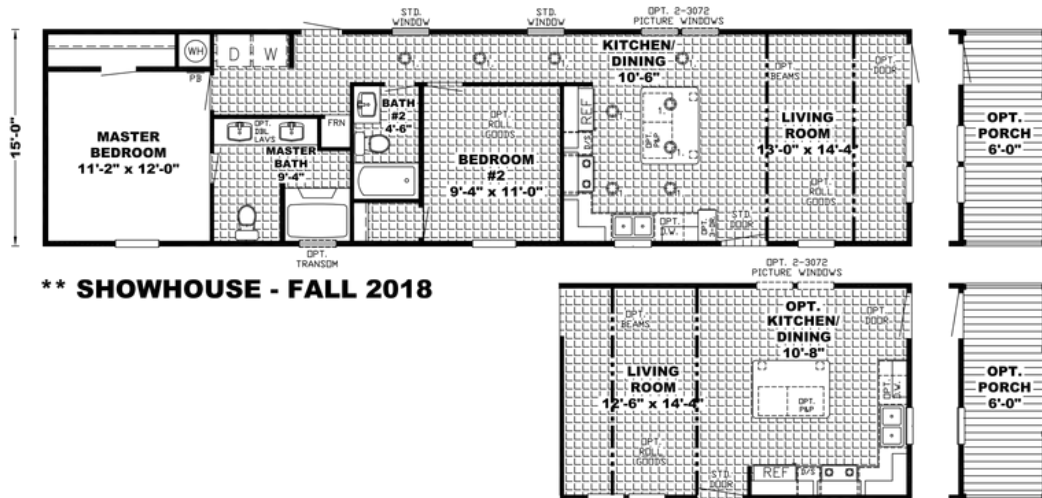
CLAYTON HOMES-JOPLIN

5609 EAST 7TH STREET
JOPLIN, MO 64801

Monday - Thursday: 9am to 6pm
Friday: 9am to 6pm
Saturday: 9am to 5pm
Sunday: Closed

(417) 553-9780

MODEL SIG16602F-60-2/16X60



THE LODGE Model number: 41SIG16602FH19

2 beds • 2 baths • 960 sq.ft. • 16' width • 60' depth

Our home building facilities invest in continuous product and process improvements. Plans, dimensions, features, materials, specifications and availability are subject to change without notice or obligation. Renderings and floor plans are representative likenesses of our homes and may differ from the actual homes. We invite you to tour a Home Center near you and inspect the highest value in quality housing available or call (417) 553-9780 to speak with a Home Consultant. Copyright 2017, CMH. All rights reserved.

<https://www.claytonhomesjoplin.com>

CLAYTON HOMES-JOPLIN

5609 EAST 7TH STREET
JOPLIN, MO 64801

Monday - Thursday: 9am to 6pm
Friday: 9am to 6pm
Saturday: 9am to 5pm
Sunday: Closed

(417) 553-9780